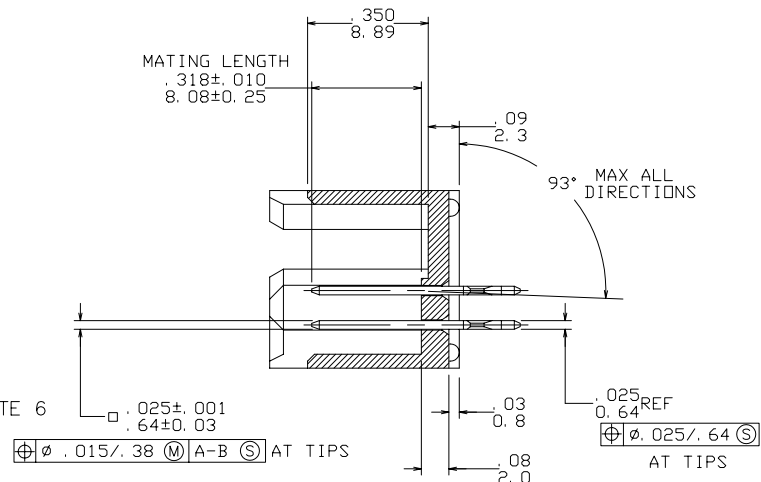
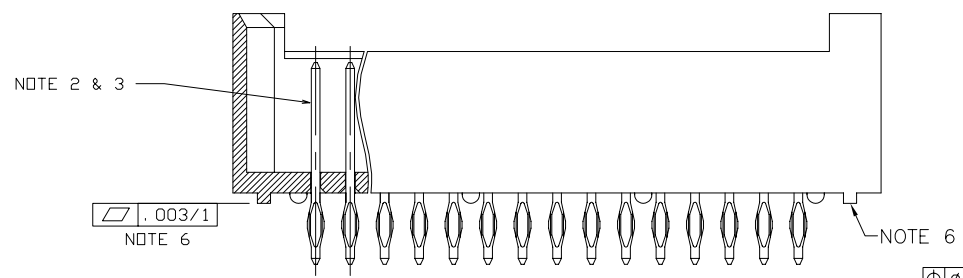
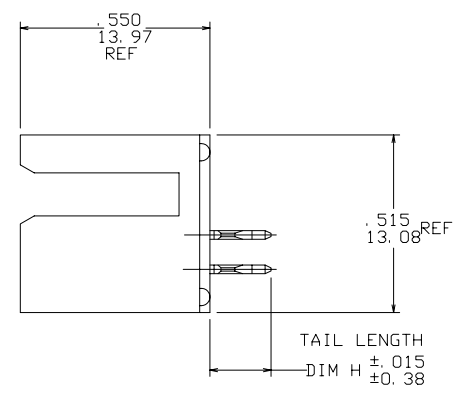
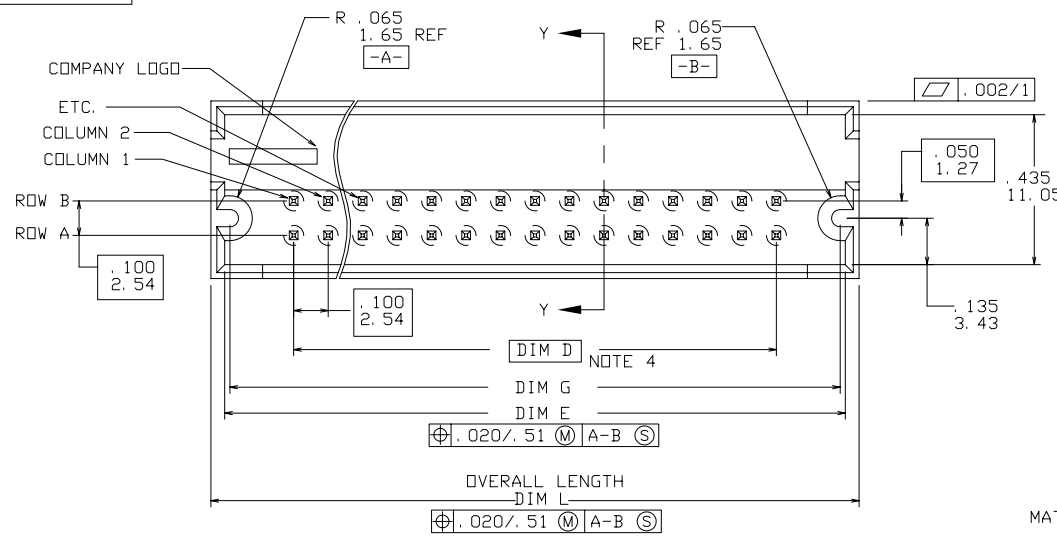


PRODUCT NUMBER
SEE TABLE



SECTION Y-Y

mat'l. code		surface ISO 1302 ✓	tolerance ISO 406 ISO 1101	projection INCH/MM	product family HEADERS
ltr	ecn no dr	date		title	
M	V12730	MRC	1/09/91	VERTICAL 2-ROW GUIDE PIN	
N	V20311	JWB	3/16/92	(SLOTTED) HEADER-PRESS FIT TAILS	
P	V41750	MDF	11/15/94	scale 2:1	dwg no sheet 1 of 3 size
R	V50831	HTB	6/12/95	M. FETROW	11/14/94
S	V71449	HTB	10/7/97	L. FYE	11/14/94
T	M05-0089	MHT	5/19/05	L. FYE	11/14/94
U	M07-0116	AGS	2/19/07	L. FYE	11/14/94
sheet	revision	U	U	U	FCJ type Product Customer Drawing
index	sheet	1	2	3	

FCI
FCIconnect.com

Copyright FCI

PRODUCT NUMBER NOTE 5, 7	SIZE NOTE 5	TAIL LENGTH DIM H	DIM D	DIM G	DIM E	OVERALL LENGTH DIM L	PLATING NOTE 11
67289-XXX	2 x XXX	.177/4.50	NOTE 4	.37/9.4+D DIM	.40/10.2+D DIM	.48/12.2+D DIM	30u"/.76u MIN Au OVER 50u"/1.27u Ni
67290-XXX		.177/4.50					15u"/.38u MIN Au OVER 50u"/1.27u Ni
67291-XXX		.177/4.50					GOLD FLASH OVER 50u"/1.27u Ni
67292-XXX		.177/4.50					120u"/3.05u 93/7 Sn/Pb OVER 50u"/1.27u Ni
67958-XXX		.310/7.90					30u"/.76u MIN Au OVER 50u"/1.27u Ni
67961-XXX		.310/7.90					15u"/.38u MIN Au OVER 50u"/1.27u Ni
68251-XXX		.680/17.30					30u"/.76u MIN Au OVER 50u"/1.27u Ni
68509-XXX		.480/12.20					30u"/.76u MIN Au OVER 50u"/1.27u Ni
68521-XXX		.480/12.20					30u"/.76u MIN GXT™ OVER 50u"/1.27u Ni
68830-XXX		.680/17.30					15u"/.38u MIN Au OVER 50u"/1.27u Ni
68831-XXX		.480/12.20					15u"/.38u MIN Au OVER 50u"/1.27u Ni
68832-XXX		.310/7.90					15u"/.38u MIN GXT™ OVER 50u"/1.27u Ni
68833-XXX		.310/7.90					30u"/.76u MIN GXT™ OVER 50u"/1.27u Ni
68834-XXX		.177/4.50					15u"/.38u MIN GXT™ OVER 50u"/1.27u Ni
68835-XXX		.177/4.50					30u"/.76u MIN GXT™ OVER 50u"/1.27u Ni
68836-XXX		.680/17.30					30u"/.76u MIN GXT™ OVER 50u"/1.27u Ni
68837-XXX		.680/17.30					15u"/.38u MIN GXT™ OVER 50u"/1.27u Ni
68838-XXX		.480/12.20					15u"/.38u MIN GXT™ OVER 50u"/1.27u Ni
69275-XXX		.310/7.90					GOLD FLASH OVER 50u"/1.27u Ni
69276-XXX		.310/7.90					120u"/3.05u 93/7 Sn/Pb OVER 50u"/1.27u Ni
69277-XXX		.480/12.20					GOLD FLASH OVER 50u"/1.27u Ni
69278-XXX		.480/12.20					120u"/3.05u 93/7 Sn/Pb OVER 50u"/1.27u Ni
69279-XXX		.680/17.30					GOLD FLASH OVER 50u"/1.27u Ni
69280-XXX		.680/17.30					120u"/3.05u 93/7 Sn/Pb OVER 50u"/1.27u Ni
69283-XXX		.177/4.50					DUPLEX 15u"/.38u Au & 100u"/1.27u 60/40 SnPb OVER 50u"/1.27u Ni
69284-XXX		.177/4.50					DUPLEX 30u"/.76u Au & 100u"/1.27u 60/40 SnPb OVER 50u"/1.27u Ni
69285-XXX		.310/7.90					DUPLEX 15u"/.38u Au & 100u"/1.27u 60/40 SnPb OVER 50u"/1.27u Ni
69286-XXX		.310/7.90					DUPLEX 30u"/.76u Au & 100u"/1.27u 60/40 SnPb OVER 50u"/1.27u Ni
69287-XXX		.480/12.20					DUPLEX 15u"/.38u Au & 100u"/1.27u 60/40 SnPb OVER 50u"/1.27u Ni
69288-XXX		.480/12.20					DUPLEX 30u"/.76u Au & 100u"/1.27u 60/40 SnPb OVER 50u"/1.27u Ni
69289-XXX		.680/17.30					DUPLEX 15u"/.38u Au & 100u"/1.27u 60/40 SnPb OVER 50u"/1.27u Ni
69290-XXX	2 x XXX	.680/17.30	NOTE 4	.37/9.4+D DIM	.40/10.2+D DIM	.48/12.2+D DIM	DUPLEX 30u"/.76u Au & 100u"/1.27u 60/40 SnPb OVER 50u"/1.27u Ni

NOTES:

- ① MOLDING MATERIAL: HI-TEMP RESIN
PER UL 94V-0
COLOR: BLACK.
- ② TERMINAL MATERIAL: 3/4 HARD PHOS BRONZE
UNS C5100.
- 3. PIN RETENTION TO BE 3 LBS/1.36 KG
MIN PER PIN IN EITHER DIRECTION.
- ④ DIM D =(NO. OF COLUMNS-1)TIMES .100/2.54
- ⑤ -XXX REPRESENTS NO. OF COLUMNS
(i.e. 2X5 PART IS -005)
-001 THRU -004 ARE NOT AVAILABLE
-005 THRU -050 ARE AVAILABLE
- ⑥ FLATNESS IS MEASURED FROM THE BOTTOM
OF THE END STANDOFFS.
- ⑦ ADD "LF" SUFFIX AT THE END OF PART NUMBER FOR LEAD FREE OPTION.
- ⑧ IF "LF" P/N THE PRODUCT MEETS EUROPEAN UNION
DIRECTIVES AND OTHER COUNTRY REGULATION AS
DESCRIBED IN GS-22-008.
- ⑩ THE PRODUCT IS NOT INTENDED TO BE EXPOSED
TO A MANUFACTURING SOLDER PROCESS.
- ⑪ PLATING OPTIONS:
MAY BE EITHER GOLD OR GXT PLATED AT MANUFACTURER'S OPTION.

mat'l. code		surface ISO 1302 ✓		tolerance ISO 406 ISO 1101		projection 		product family HEADERS	
ltr	ecn	no	dr	date		tolerances unless otherwise specified		title	
U						angles	linear	.XX±.01/.3	INCH/MM
						0°±2'		.XXX±.005/.13	VERTICAL 2-ROW GUIDE PIN
								.XXXX±.0020/.051	(SLOTTED) HEADER-PRESS FIT TAILS
						dr	M. FETROW	11/14/94	dwg no
						enr	L. FYE	11/14/94	sheet 2 of 3
						chr	L. FYE	11/14/94	size
						appd	L. FYE	11/14/94	A3
sheet index		revision sheet						type Product Customer Drawing	

PRODUCT NUMBER NOTE 5 ,7	SIZE NOTE 5	TAIL LENGTH DIM H	DIM D	DIM G	DIM E	OVERALL LENGTH DIM L	PLATING NOTE 11
67289-XXXLF	2 x XXX	.177/4.50	NOTE 4	.37/9.4+D DIM	.40/10.2+D DIM	.48/12.2+D DIM	30u"/.76u MIN Au OVER 50u"/1.27u Ni
67290-XXXLF		.177/4.50					15u"/.38u MIN Au OVER 50u"/1.27u Ni
67291-XXXLF		.177/4.50					GOLD FLASH OVER 50u"/1.27u Ni
67292-XXXLF		.177/4.50					100u"/2.54u Sn OVER 50u"/1.27u Ni
67958-XXXLF		.310/7.90					30u"/.76u MIN Au OVER 50u"/1.27u Ni
67961-XXXLF		.310/7.90					15u"/.38u MIN Au OVER 50u"/1.27u Ni
68251-XXXLF		.680/17.30					30u"/.76u MIN Au OVER 50u"/1.27u Ni
68509-XXXLF		.480/12.20					30u"/.76u MIN Au OVER 50u"/1.27u Ni
68521-XXXLF		.480/12.20					30u"/.76u MIN GXT™ OVER 50u"/1.27u Ni
68830-XXXLF		.680/17.30					15u"/.38u MIN Au OVER 50u"/1.27u Ni
68831-XXXLF		.480/12.20					15u"/.38u MIN Au OVER 50u"/1.27u Ni
68832-XXXLF		.310/7.90					15u"/.38u MIN GXT™ OVER 50u"/1.27u Ni
68833-XXXLF		.310/7.90					30u"/.76u MIN GXT™ OVER 50u"/1.27u Ni
68834-XXXLF		.177/4.50					15u"/.38u MIN GXT™ OVER 50u"/1.27u Ni
68835-XXXLF		.177/4.50					30u"/.76u MIN GXT™ OVER 50u"/1.27u Ni
68836-XXXLF		.680/17.30					30u"/.76u MIN GXT™ OVER 50u"/1.27u Ni
68837-XXXLF		.680/17.30					15u"/.38u MIN GXT™ OVER 50u"/1.27u Ni
68838-XXXLF		.480/12.20					15u"/.38u MIN GXT™ OVER 50u"/1.27u Ni
69275-XXXLF		.310/7.90					GOLD FLASH OVER 50u"/1.27u Ni
69276-XXXLF		.310/7.90					100u"/2.54u Sn OVER 50u"/1.27u Ni
69277-XXXLF		.480/12.20					GOLD FLASH OVER 50u"/1.27u Ni
69278-XXXLF		.480/12.20					100u"/2.54u Sn OVER 50u"/1.27u Ni
69279-XXXLF		.680/17.30					GOLD FLASH OVER 50u"/1.27u Ni
69280-XXXLF		.680/17.30					100u"/2.54u Sn OVER 50u"/1.27u Ni
69283-XXXLF		.177/4.50					DUPLEX 15u"/.38u Au & 100u"/2.54u Sn OVER 50u"/1.27u Ni
69284-XXXLF		.177/4.50					DUPLEX 30u"/.76u Au & 100u"/2.54u Sn OVER 50u"/1.27u Ni
69285-XXXLF		.310/7.90					DUPLEX 15u"/.38u Au & 100u"/2.54u Sn OVER 50u"/1.27u Ni
69286-XXXLF		.310/7.90					DUPLEX 30u"/.76u Au & 100u"/2.54u Sn OVER 50u"/1.27u Ni
69287-XXXLF		.480/12.20					DUPLEX 15u"/.38u Au & 100u"/2.54u Sn OVER 50u"/1.27u Ni
69288-XXXLF		.480/12.20					DUPLEX 30u"/.76u Au & 100u"/2.54u Sn OVER 50u"/1.27u Ni
69289-XXXLF		.680/17.30					DUPLEX 15u"/.38u Au & 100u"/2.54u Sn OVER 50u"/1.27u Ni
69290-XXXLF	2 x XXX	.680/17.30	NOTE 4	.37/9.4+D DIM	.40/10.2+D DIM	.48/12.2+D DIM	DUPLEX 30u"/.76u Au & 100u"/2.54u Sn OVER 50u"/1.27u Ni



FCIconnect.com

Copyright FCI

mat'l. code		surface ISO 1302 ✓		tolerance ISO 406 ISO 1101		projection 		product family HEADERS	
ltr	ecn	no	dr	date		tolerances unless otherwise specified		title	
U						angles	linear	.XX±.01/.3	INCH/MM
						0°±2'		.XXX±.005/.13	VERTICAL 2-ROW GUIDE PIN
								.XXXX±.0020/.051	(SLOTTED) HEADER-PRESS FIT TAILS
						dr	M. FETROW	11/14/94	dwg no
						enr	L. FYE	11/14/94	sheet 3 of 3
						chr	L. FYE	11/14/94	size
						appd	L. FYE	11/14/94	A3
sheet index		revision sheet						type Product Customer Drawing	

form: A3